

Service of Holy Communion



Fourteenth Week after Pentecost

2 September 2020

Commemoration of Hannah

Chapel of St. Timothy & St. Titus | Concordia Seminary

LUTHERAN SERVICE BOOK Divine Service Setting 1, pp. 151–166

Pre-Service Music

—stand if able—

Confession and Absolution

p. 151

Salutation and Prayer of the Day

p. 156

—sit—

First Reading

Ezekiel 33:7-9

—stand if able—

Gospel Acclamation: Alleluia and Verse

p. 156

Gospel Reading

Matthew 18:1-20

—sit—

Homily

—stand if able—

Hymn of the Day

LSB 802

Prayers of the Church

p. 159

Offertory

"He Will Hold Me Fast"

Ada Ruth Habershon | Matthew Merker

1. When I fear my faith will fail, Christ will hold me fast;
 2. Those He saves are His de - light, Christ will hold me fast;
 3. For my life He bled and died, Christ will hold me fast;

5
 When the temp - er would pre - vail, He will hold me fast.
 Pre - cious in His ho - ly sight, He will hold me fast.
 Just - ice has been sat - is - fied, He will hold me fast.

9
 I could nev - er keep my hold through life's fear - ful path;
 He'll not let my soul be lost, ... His Prom - is - es shall last;
 Raised with Him to end - less life, He will hold me fast

13
 For my love is of - ten cold; He must hold me fast.
 Bought by Him at such a cost, He will hold me fast.
 Till our faith is turned to sight When He comes at last!

17
 He will hold me fast, He will hold me fast;

21
 For my Sav - ior loves me so, He will hold me fast.

—sit—

The Lord's Supper will be distributed at four stations, instead of the altar rails, on each side of the chancel, two on the chancel level and two on the nave floor. Please proceed to whichever station is available on either side as you approach the altar. The pulpit side and south transept will come forward first, then the lectern side and north transept, and then the overflow in Werner.

Communion Music

Behold the Lamb



Be-hold the Lamb who bears our sins a-way, slain for us:
The bod-y of our Sav-iour, Je-sus Christ, torn for you:
The blood that cleans-es ev-'ry stain of sin, shed for you:
And so with thank-ful-ness and faith we rise to res-pond



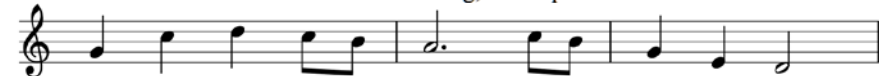
And we re-mem-ber the pro-mise made that all who
Eat and re-mem-ber the wounds that heal, the death that
Drink and re-mem-ber He drained death's cup that all may
and to re-mem-ber our call to fol-low in the



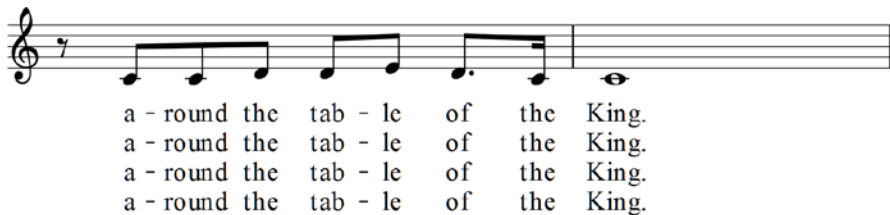
come in faith find for-give-ness at the cross. So we
brings us life, paid the price to make us one. So we
en-ter in to re-ceive the life of God. So we
steps of Christ as His bo-dy here on earth. As we



share in this bread of life, and we drink of His
share in this bread of life, and we drink of His
share in this bread of life, and we drink of His
share in His suf-fer-ing, we pro-claim Christ will



sac-ri-fice as a sign of our bonds of peace
sac-ri-fice as a sign of our bonds of love
sac-ri-fice as a sign of our bonds of grace
come a-gain! And we'll join in the feast of heav'n



Dismissal

—stand if able—

Post-Communion Collect and Blessing

p. 166

The Servants of the Word

Presider: Dean of the Chapel Kent Burreson

Preacher: Professor Joel Elowsky

Assistant: Chaplain Paul Sieveking

Lead musician: Director of Music Arts James Marriott

In Preparation for Communion

To Our Guests:

The Lord's Supper is celebrated on our campus in the confession and glad confidence that our Lord, as He says, gives not only bread and wine, but His very body and blood to eat and drink for the forgiveness of sin. In joyful obedience to the clear teaching of our Lord Jesus those are invited to His table who trust His words, repent of all sin, and set aside any refusal to forgive and love as He forgives and loves us. They show forth His death until He comes. Because Holy Communion is a confession of the faith which is confessed at this altar, any who are not yet instructed, in doubt, or who hold a confession differing from that of The Lutheran Church—Missouri Synod and so are unable to receive the Sacrament are invited to meditate on God's Word in the distribution hymns and pray for the day when divisions will have ceased. **-Kent J. Burreson, Dean of the Chapel**

Notes Regarding Communion

- The campus Lord's Supper is sponsored and hosted by Hope Lutheran Church, St. Louis, and Pastor Randy Asbury.
- We drink the joyous cup of salvation from wine that is grown and produced locally, fruit of the earth that surrounds us here in Missouri, gifts of the Creator's hand. The Chapel's Red Wine is from Montelle Winery, Augusta, Missouri and the White Wine is from Blumenhof Winery, Dutzow, Missouri.

Private Confession and Absolution

Contact Chaplain Sieveking to arrange for confession and absolution.

Prayer Requests

- Partner Church Bodies: Confessional Lutheran Church of Chile led by President Gerardo Kinas
- Synodical Leaders: Synodical President Matthew Harrison
- Districts and District Presidents: Atlantic District led by President Derek Lecakes
- Missionaries: Thomas Aadland serving in Kenya, Alyssa Anders serving in Russia, the Joe and Jennie Asher Family serving in Germany, and the Kipp and Tami Beaudoin Family serving in Eastern Europe
- The Poor and Those Suffering from Natural and Man-Made Disasters: California, Iowa, Louisiana, and Texas; Mozambique, Malawi, Madagascar, Zimbabwe, South Africa, and flooding in countries throughout the world
- Those who are ill/undergoing surgery: Rev. Erich Kaelberer battling ALS; Roger Drinnon, father to graduate student Roger Drinnon, battling cancer; Retired staff member Dick Jostes who has entered hospice care; Professor emeritus David Berger, rehabilitating from various health complications after a fall.
- Those Mourning: Professor Paul Robinson and his family at the death of his father, William; Retired Seminary Nurse Betty Ann Knackstedt and her family at the death of her husband, Jim; The family and friends of Coy Tollefson, a high school classmate of Nick Wagenknecht, who died unexpectedly this weekend, and of Terry DeGroot, a friends of Nick Wageenknecht, who was tragically shot and killed
-

Notes on the weekly cycle of the Divine Service

Why does the Liturgical Week begin on Wednesdays in the chapel? As a seminary our focus is upon the formation of pastors, deaconesses, and church workers. Since students are involved in resident field education and congregational life on Sundays transitioning the weekly calendar on Wednesdays assists students in preparing to engage the readings and themes for the coming Sunday in advance and allows us to reflect on those themes and readings in chapel on Mondays and Tuesdays.

Different elements of the divine service are used each week depending upon the theme and focus of the service. Among the elements not used every week are the Creed, the post-communion canticle, the Kyrie, the hymn of praise, and general confession and absolution. Corporate confession and absolution, while a very healthy practice, like private confession and absolution, is not a prerequisite for hearing the Word or receiving the Supper. On the Wednesdays when it is not used the baptized are encourage to avail themselves of private confession and absolution.

Notes on the Weekly Cycle of Chapel Services

A typical pattern of services has been established to provide regularity and a basis for locating services in the church's various cultural patterns.

<u>Mondays</u>	Preaching Services using Responsive Prayer 1 and 2
<u>Tuesdays</u>	Alternating weekly services of Matins and Morning Prayer, often without sermons, aiming to use every element, including the weekly Psalm
<u>Wednesdays</u>	Various Eucharist settings with texts for the following Sunday, hosted this year by Hope Lutheran Church, St. Louis, Missouri and Randy Asbury (CSL 1990).
<u>Thursdays</u>	Unique Settings for Daily Prayer such as Baptismal Remembrance, Corporate Confession and Absolution, Taize, Lectio Divina, including Communal Intercessory Prayers
<u>Fridays</u>	Service of Prayer and Preaching

Submitting Prayer Requests

Please submit prayer requests for weekly chapel services through Semnet. The submission form can be found at

<https://semnet.csl.edu/SelfService/csl/resources/CampusLife/Chapel/ChapelPrayerRequest.aspx>. Submitting the request through Semnet insures that all of the chapel staff are informed of the request and that it is included in the daily chapel services.

Weekly Prayer Cycle

Mondays: Vicars and Interns, Students, Faculty (active and emeriti), Staff, Board of Regents, Grounds Workers and Maintenance Employees

Tuesdays: Life Prayer, Persecuted Christians (by country), Nations, Local, State and Federal Leaders, Donors supporting the seminary

Wednesdays: Partner church bodies, synodical leaders, districts and district presidents, missionaries, campus host congregation and pastors

Thursdays: Communal Prayers

Fridays: Travelers, CTS, President Rast and faculty, staff, and students and CUS schools and their presidents, CSL students in first calls



Reflections on the Gospel for the upcoming Sunday, from Matthew 18, from Ted and Rick (dark nose) by LCMS Pastor James Wetzstein (Agnus Day appears with the permission of www.agnusday.org).

Acknowledgements

"He Will Hold Me Fast." CCLI Song # 7016161. Ada Ruth Habershon | Matthew Merker © 2013 Getty Music Publishing (Admin. by Music Services, Inc.); Matthew Merker Music (Admin. by Music Services, Inc.). *For use solely with the SongSelect® [Terms of Use](http://www.ccli.com). All rights reserved. www.ccli.com.* CCLI License # 3258602. "Behold the Lamb." CCLI Song # 5003372. Keith Getty | Kristyn Getty | Stuart Townend. © 2007 Thankyou Music (Admin. by Capitol CMG Publishing). *For use solely with the SongSelect [Terms of Use](http://www.ccli.com). All rights reserved. www.ccli.com.* CCLI License # 3258602.