



CONCORDIA SEMINARY, ST. LOUIS
OPENING SERVICE
181ST ACADEMIC YEAR

The Installations of Dr. Benjamin Haupt, Dr. Glenn Nielsen,
Dr. David Peter, Dr. Mark Rockenbach and Dr. William Schumacher
The Assignment of Vicarages and Internships

The Tenth Week after Pentecost
10 a.m. Friday, August 23, 2019

The Chapel of St. Timothy and St. Titus
Concordia Seminary, St. Louis



GRACE MERCY
Lives
OF
SIGNIFICANCE
PEACE

In Nomine Jesu

SERVICE OF THE WORD

PRE-SERVICE MUSIC

PROCESSIONAL HYMN

Stand and face the processional cross, turning as it passes you.

O Holy Spirit, Enter In (LSB 913)



1 O Ho - ly Spir - it, en - ter in, And in our hearts
2 Give to Your Word im - pres - sive pow'r, That in our hearts
3 O might - y Rock, O Source of life, Let Your dear Word,



Your work be - gin, Your dwell - ing place now make us.
from this good hour As fire it may be glow - ing,
in doubt and strife, In us be strong - ly burn - ing



Sun of the soul, O Light di - vine, A - round and in
That in true Chris - tian u - ni - ty We faith - ful wit -
That we be faith - ful un - to death And live in love



us bright - ly shine, To joy and glad - ness wake us
ness - es may be, Your glo - ry ev - er show - ing.
and ho - ly faith, From You true wis - dom learn - ing.



That we may be Tru - ly liv - ing, To You giv - ing
Hear us, cheer us By Your teach - ing; Let our preach - ing
Your grace and peace On us show - er; By Your pow - er



Prayer un - ceas - ing And in love be still in - creas - ing.
And our la - bor Praise You, Lord, and serve our neigh - bor.
Christ con - fess - ing, Let us see our Sav - ior's bless - ing.

SALUTATION AND PRAYER OF THE DAY

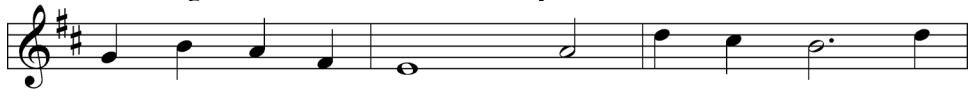
- L: The grace of our Lord ☩ Jesus Christ, the love of God and the communion of the Holy Spirit be with you all.
 C: **And also with you.**
 L: Let us pray ... Father, Son and Holy Spirit.
 C: **Amen.**

HYMN OF PRAISE

O Splendor of God's Glory Bright (LSB 874)



1 O Splen - dor of God's glo - ry bright,	O Thou that
2 Come, ver - y Sun of truth and love;	Pour down Thy
3 With prayer the Fa - ther we im - plore:	O Fa - ther,
4 To guide what-e'er we no - bly do,	With love all



bring - est light from light,	O Light of Light, light's
ra - diance from a - bove	And shed the Ho - ly
glo - rious ev - er - more,	We plead with Thee for
en - vy to sub - due,	To give us grace our



liv - ing spring,	O Day, all days il - lu - min - ing:
Spir - it's ray	On all we think or do or say.
grace and pow'r	To con - quer in temp - ta - tion's hour,
wrongs to bear,	To make ill for - tune turn to fair.



Al - le - lu - ia!
Al - le - lu - ia!
Al - le - lu - ia!
Al - le - lu - ia!

- | | |
|---|---|
| <p>5 On Christ, the true bread, let us feed;
 Let Him to us be drink indeed;
 And let us taste with joyfulness
 The Holy Spirit's plenteousness.
 Alleluia!</p> | <p>6 All laud to God the Father be;
 All praise, eternal Son, to Thee;
 All glory to the Spirit raise
 In equal and unending praise.
 Alleluia!</p> |
|---|---|

Sit

FIRST READING

*The first reading will be read in English, Spanish and a third language
representing the cultural and linguistic diversity of the Concordia Seminary community.
The response to the reading in the third language will be in English.*

Philippians 2:12-18

L: This is the Word of the Lord.

C: **Thanks be to God.**

L: *Hermanas y hermanos, esta es Palabra de Dios,*

C: ***Te alabamos, Señor.***

Stand

GOSPEL ACCLAMATION

Speak, O Lord (Getty)

1. Speak, O Lord, as we come to you to re -
 2. Teach us Lord, full o - be - di - ence, ho - ly
 3. Speak, O Lord, and re - new our minds; Help us

3
 ceive the food of your ho - ly word. Take your truth, plant it
 re - ve - rence, true hu - mil - i - ty. Test our thoughts and our
 grasp the heights of your plans for us. Truths un - changed from the

6
 deep in us; Shape and fash - ion us in your like - ness, That the
 at - ti - tudes in the ra - di - ance of your pu - ri - ty. Cause our
 dawn of time that will ec - ho down through e - ter - ni - ty. And by

9
 light of Christ might be seen to - day in our acts of love and our
 faith to rise, cause our eyes to see your ma - jes - tic pow'r and au -
 grace we'll stand on your pro - mis - es; And by faith we'll walk as you

12
 deeds of faith. Speak, O Lord, and ful - fill in us all your
 thor - i - ty. Words of pow'r that can ne - ver fail; Let their
 walk with us. Speak, O Lord, till your church is built and the

15
 pur - truth - earth pos - es - pre - vail - is filled for - ov - with your glo - ry. un - be - lief. glo - ry.

GOSPEL READING

John 9:1-5

L: This is the Word of the Lord.

C: Thanks be to God.

L: *Hermanas y hermanos, esta es Palabra de Dios,*

C: *Te alabamos, Señor.*

Sit

HYMN OF THE DAY

Pues si vivimos *When We are Living*

The cantor will sing the first stanza in Spanish.

The assembly will repeat the first stanza and sing all additional stanzas in either Spanish or English.



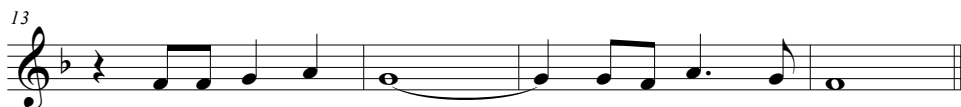
Pues si vi - vi - mos, _____ pa - ra él vi - vi - mos,
When we are liv - ing, _____ it is in Christ Je - sus,



y si mo - ri - mos _____ pa - ra él mo - ri - mos.
and when we're dy - ing, _____ it is in the Lord. _____



Sea que vi - va - mos _____ o que mu - ra - mos,
Both in our liv - ing _____ and in our dy - ing,



so - mos del Se - ñor, _____ so - mos del Se - ñor.
we be - long to God, _____ we be - long to God.

2 En esta vida frutos hay que dar
y buenas obras hemos de ofrendar
sea que demos o recibamos,
somos del Señor, somos del Señor.

*Through all our living, we our fruits must give,
Good works of service are for offering,
When we are giving, or when receiving,
we belong to God, we belong to God.*

3 En las tristeza y en el dolor,
en la belleza y en el amor,
sea que suframos o que gocemos,
somos del Señor, somos del Señor.

*'Mid times of sorrow and in times of pain,
when sensing beauty or in love's embrace,
whether we suffer, or sing rejoicing,
we belong to God, we belong to God.*

4 En este mundo por doquier habrá
gente que llora y sin consolar.
Sea que ayudemos o alimentemos,
somos del Señor, somos del Señor.

*Across this wide world, we shall always find
those who are crying with no peace of mind;
and when we help them, or when we feed them,
we belong to God, we belong to God.*

SERMON

John 9:1-5

Theme for the academic year: **“Grace. Mercy. Peace. Lives of Significance.”**

RITE OF INSTALLATION

RECOGNITION OF NEW STAFF MEMBERS

ASSIGNMENT OF VICARAGES AND INTERNSHIPS

RECOGNITION OF REGENT AND PRESIDENTIAL AWARD RECIPIENTS

WELCOME AND BLESSING OF NEW STUDENTS

Stand

HYMN

Gracious Spirit, Heed Our Pleading

*The cantor will sing the refrain first in Swahili. The assembly will then sing the refrain in Swahili and the verses in English.
The assembly is encouraged to sing in harmony.*

1
Gra-cious Spir - it, heed our plead - ing, fash - ion us all a - new.

5
It's your lead - ing that we're need - ing, help us to fol - low you.

9
Come, — Njo - o, Come, — njo - o, come, Ho - ly Spir - it, come. Ro - ho, mwe - ma.

13
Come, — Njo - o, Come, — Njo - o, come, Ho - ly Spir - it, come. njo - o, Ro - ho, mwe - ma.

- | | | | |
|---|---|---|--|
| 2 | Come to teach us, come to nourish those who believe in Christ. Bless the faithful, may they flourish, strengthened by grace unpriced. | 4 | Not mere knowledge, but discernment, nor rootless liberty; turn disquiet to contentment, doubt into certainty. |
| 3 | Guide our thinking and our speaking done in your holy name. Motivate all in their seeking, freeing from guilt and shame. | 5 | Keep us fervent in our witness; unswayed by earth's allure. Ever grant us zealous fitness, which you alone assure. |

PRAYERS

L: We implore you:

C: Hear us, good Lord.

SHARING OF THE PEACE

Sit

OPENING OF THE 181ST ACADEMIC YEAR

Stand

BLESSING

SENDING HYMN

God of Grace and God of Glory (LSB 850)



1 God of grace and God of glo - ry, On Your peo - ple
2 Lo, the hosts of e - vil round us Scorn the Christ, as -
3 Cure Your chil - dren's war - ring mad - ness; Bend our pride to
4 Save us from weak res - ig - na - tion To the e - vils



pour Your pow'r; Crown Your an - cient Church's sto - ry;
sail His ways! From the fears that long have bound us
Your con - trol; Shame our wan - ton, self - ish glad - ness,
we de - plore; Let the gift of Your sal - va - tion



Bring its bud to glo - rious flow'r. Grant us wis - dom,
Free our hearts to faith and praise. Grant us wis - dom,
Rich in things and poor in soul. Grant us wis - dom,
Be our glo - ry ev - er - more. Grant us wis - dom,



grant us cour - age For the fac - ing of this
grant us cour - age For the liv - ing of these
grant us cour - age Lest we miss Your king - dom's
grant us cour - age, Serv - ing You whom we a -



hour, For the fac - ing of this hour.
days, For the liv - ing of these days.
goal, Lest we miss Your king - dom's goal.
dore, Serv - ing You whom we a - dore.

POST-SERVICE MUSIC

Soli Deo Gloria

THE SERVANTS OF THE WORD

Liturgist:

Dr. Kent Bureson

*Associate Professor of Systematic Theology
Louis A. Fincke and Anna B. Shine Professor
of Systematic Theology
Dean of Chapel*

Preacher:

Dr. Dale A. Meyer

*President
Professor of Practical Theology*

Presenter of Vicarages and Internships:

Dr. Glenn Nielsen

*Director of Vicarage and
Deaconess Internships
Director of Placement
Professor of Practical Theology*

Crucifer:

Matthew Bohlmann

*Student Association President
Post-Vicarage Seminarian*

Organist:

Dr. James Marriott

*Kreft Chair for Music Arts
Director of Musical Arts*

ACKNOWLEDGMENTS:

Liturgical Texts from Lutheran Service Book © 2006 Concordia Publishing House. Reprinted with permission. Holy Bible, English Standard Version, copyright 2001 by Crossway Bibles, a division of Good News Publishers. Used by permission. All rights reserved. "Speak, O Lord." CCLI Song # 4615235. Keith Getty | Stuart Townend © 2005 Thankyou Music (Admin. by Capitol CMG Publishing). For use solely with the SongSelect® Terms of Use. All rights reserved. www.ccli.com. CCLI License # 3258602. "Pues si vivimos." Text in Spanish, sts. 2-4: © 1983, Abingdon Press, admin. Copyright Company; Text in English © 1989, The United Methodist Publishing House, admin. Copyright Company. Used by permission. Reprinted under Onelicense.net # A-704946. "Gracious Spirit, Heed Our Pleading." Text and Tune: © Lutheran Theological College, Makumira, Tanzania,; admin. Augsburg Fortress. Used by permission. Reprinted under Onelicense.net # A-704946.

RECOGNITION OF NEW STAFF MEMBERS

Jamie Dienell is Curriculum Design and Development Specialist

Megan Duncan is Manager, Annual Giving

Kathleen Gamble is Coordinator, Food Bank

Julie Gary is Coordinator, Health and Wellness

Natalie Gersema is Coordinator, Campus Events

Jennifer Ledbetter is Gift Processor

Sarah Maney is Communications Specialist

Erica Tape is Communications Specialist

Laura Thomas is Senior Gift Officer

RECOGNITION OF NEW POSITIONS FOR EXISTING FACULTY AND STAFF

Erika Bennett is Director, Continuing Education

Marla Bostic is Administrator, Campus Store

Alix-Ann O'Brien is Director, Campus Services

Dr. Benjamin Haupt is Associate Provost

Dr. David Peter is Dean of Faculty

Dr. Mark Rockenbach is Director of the Doctor of Ministry Program

Dr. David Schmitt is Chairman of the Department of Practical Theology

Dr. William Schumacher is the Buehner-Duesenberg Professor of Missions

THE INSTALLATION OF DR. BENJAMIN HAUPT

Dr. Benjamin Haupt is associate provost, assistant professor of Practical Theology and director of Library Services at Concordia Seminary, St. Louis.

As associate provost, Haupt assists the Seminary provost in achieving key strategic priorities in support of the mission of the Seminary. He oversees the Seminary's recruitment and admissions team, and serves as a liaison to faculty and staff involved in accomplishing the Seminary's enrollment goals related to its residential, distance and multiethnic Ministerial Formation programs and Advanced Studies programs. Haupt has been a faculty member since 2013.

His areas of interest and expertise include the history of the text of the New Testament, early Christianity prior to Constantine, the theology and practice of preaching, and pastoral leadership.

He earned his Ph.D. from the University of Birmingham, U.K. (2019), and both his Master of Sacred Theology (2011) and Master of Divinity (2005) from Concordia Seminary, St. Louis. He received a bachelor's degree from Concordia University Wisconsin, Mequon (2000).

During his M.Div. Program, he studied for a year at *Lutherische Theologische Hochschule* in Oberursel, Germany. After graduation he was installed as an associate pastor at St. Paul Lutheran Church in Boca Raton, Fla., and served there until 2008. From 2008-13 he was the sole pastor of Good Shepherd Lutheran Church in Gainesville, Ga.

Haupt has been speaking, teaching and writing since 2008 and has been involved with a variety of seminars ranging from lay-focused sessions for people in Haiti to breakout sessions at conferences throughout the United States. His writing includes a translation of a sermon for Luther's Works, vol. 58, essays on the early history of the New Testament text in the writings of church fathers, and his Ph.D. dissertation, "Tertullian's Text of the New Testament Outside the Gospels."

Haupt is married to Celina, who serves as women's coordinator for the Seminary's Families in Transition program. They have two sons. He and his family are avid travelers, Lego-maniacs and video gamers. He leads the Concordia Wine Society.

THE INSTALLATION OF DR. GLENN NIELSEN

Dr. Glenn Nielsen is the director of Placement, director of Vicarage and Deaconess Internships, and professor of Practical Theology at Concordia Seminary, St. Louis.

Nielsen has been a faculty member and director of Vicarage since 1990. In 2007 he also assumed responsibilities of the internship program for the Seminary's Deaconess Studies Program. He was named director of Placement in 2017.

His areas of interest and expertise include communication, rhetoric and homiletics. Particularly, Nielsen has studied the use of creative means within a sermon.

Nielsen received his Master of Divinity and Master of Sacred Theology from Concordia Seminary (1981, 1987). He also holds a bachelor's degree from Valparaiso University in Valparaiso, Ind., and a master's degree and a Ph.D. from Northwestern University in Chicago (1989, 1993).

Nielsen has published the *LifeLight™ Foundations Bible Study: Miracles* and study notes for Psalms 90-105 in the *Lutheran Study Bible* for Concordia Publishing House. He published a worship and preaching CD through Creative Communications for the Parish, titled *A Living, Daring Confidence: A Worship Series on Romans*. He contributed the chapter "Evaluating and Extending the Research Implications" in *The Pastor's Brain Manual: A Fascinating Work in Progress* (Lutheran University Press, 2015). He has authored several articles, including pieces focused on preaching for the modern era and engaging worshipers.

He also has submitted several items for *Concordia Pulpit Resources*, including one article on sermon delivery and one on preaching in a series, as well as one module for The Lutheran Church—Missouri Synod "Preach the Word" project on sermon application. He contributed several long-form articles to *Concordia Theology on medicine, habitus, preaching and the Comfort Dog ministry*.

Nielsen and his wife, Sue, are handlers for Noah, a Lutheran Church Charities' K-9 Comfort Dog who is part of a compassion ministry of Timothy Lutheran Church in St. Louis, Mo. Noah Comfort Dog travels to churches, schools, nursing homes, hospitals and events in the St. Louis area. He also can be deployed in disaster response situations.

The Niensens have three grown children and recently experienced the loss of one adult child. They are blessed with two grandchildren. Nielsen enjoys baseball, spending time with family and taking Noah for daily walks.

THE INSTALLATION OF DR. DAVID PETER

Dr. David Peter is professor of Practical Theology and dean of faculty at Concordia Seminary, St. Louis.

Peter has been a faculty member since 1998. He served as chairman of the Department of Practical Theology (2010-18). He formerly served as the director of the Doctor of Ministry Program (1998-2013).

His areas of interest include the dynamics of pastoral leadership in different sizes of congregations. He also works to support pastors and lay leaders of mid-sized congregations to engage in the challenges and opportunities distinctive of that congregational size. He specializes in good preaching, especially that which demonstrates the characteristics of biblical exposition.

Peter teaches courses in homiletics, pastoral ministry, pastoral leadership, parish administration and Old Testament survey at the pre-seminary, Master of Divinity, distance certification and doctoral levels.

Before joining the Seminary, Peter served as a visiting instructor of theology at Concordia University, Nebraska, Seward (1987-88). He also served as associate pastor at Trinity Evangelical Lutheran Church in Peoria, Ill., (1988-95) and then as senior pastor (1995-98).

Peter received his Master of Divinity from Concordia Seminary (1987). He also has a bachelor's degree from the University of Nebraska-Lincoln and a Doctor of Ministry from Trinity Evangelical Divinity School in Deerfield, Ill. (1999).

Peter recently published *Maximizing the Midsized Church: Effective Leadership for Fruitful Mission and Ministry* (Kregel, 2018).

He has published Bible study resources for congregations through The Lutheran Church—Missouri Synod, and several sermons and devotional resources through Creative Communications for the Parish and Concordia Seminary. Peter has published *Christ Our Passover Lenten Sermon Series* for Concordia Publishing House (CPH, 1994) and contributed a collection of essays in *Preaching Is Worship* (CPH, 2011). He has published articles in *Concordia Journal*, *Concordia Pulpit Resources*, *The Servant* and *Issues in Christian Education*, and has led seminars on the book of Revelation.

Peter and his wife, Tonya, have two sons. His personal interests include home and yard improvement, running, playing piano, hiking and camping.

THE INSTALLATION OF DR. MARK ROCKENBACH

Dr. Mark Rockenbach is associate professor of Practical Theology, adviser for personal growth and leadership development, director of the Institutional Review Board and director of the Doctor of Ministry Program at Concordia Seminary, St. Louis.

He has been a faculty member since 2014. His areas of expertise include pastoral care, Christian counseling, forgiveness and reconciliation, congregational conflict and congregational field research.

Before joining the Seminary, Rockenbach served as pastor of First Trinity Lutheran Church in Beatrice, Neb. (1998-2006). He also has served as a vacancy pastor at other congregations in Kansas and Nebraska. From 2005 to 2014, he was as an adjunct professor at Concordia University, Nebraska, Seward and at Concordia University, Wisconsin, Mequon.

He received his Master of Divinity from Concordia Seminary (1998). He also holds a bachelor's degree from Concordia University, Nebraska, Seward (1994); a master's degree from Doane College (2005); and a Ph.D. from Capella University in Minneapolis, Minn. (2014).

In addition to his Seminary work, he has served The Lutheran Church—Missouri Synod (LCMS) as a hearing facilitator (2005-16). He also served as a conflict intervention team member for Ambassadors of Reconciliation in Billings, Mont., and worked as an executive for the LCMS Nebraska District for church worker health and reconciliation (2006-14).

He is a regular speaker at conferences presenting on a variety of topics including conflict reconciliation, the task of pastoral theology, Christocentric counseling and care for church workers. He and his wife, Darlene, have three children.

THE INSTALLATION OF DR. WILLIAM SCHUMACHER

Dr. William W. Schumacher is mission professor of Historical Theology, director of the Institute for Mission Studies and the Buehner-Duesenberg Professor of Missions at Concordia Seminary, St. Louis.

He became a faculty member in 1996. He served as chairman of the Department of Historical Theology (2014-17). He also served as assistant to the director of Resident Field Education for cross-cultural experiences (1996-2007) and dean of Theological Research and Publication (2006-12). Before joining the Seminary, Schumacher served as a missionary in Botswana, Africa (1985-95) and theological coordinator for Africa for The Lutheran Church—Missouri Synod (2010-12). He has taught and lectured internationally in Europe, Africa, Asia and Latin America.

He received his Master of Divinity, Master of Sacred Theology and Doctor of Philosophy from Concordia Seminary, St. Louis (1985, 1996, 2003). He earned his bachelor's degree *summa cum laude* in German language and literature from Wartburg College in Waverly, Iowa (1981).

He has published *Who Do I Say That You Are?: Anthropology and the Theology of Theosis in the Finnish School of Tuomo Mannermaa* (Wipf and Stock Publishers), as well as numerous articles in *Concordia Journal* and other periodicals.

He and his wife, Tamara, have three grown children.

ASSIGNMENT OF VICARAGES AND INTERNSHIPS

SPECIFIC MINISTRY PASTOR (SMP)

- Shaun Adams**, Beautiful Savior Church, Spokane, Wash., LCMS Northwest District
- Ray Anderson**, St. Paul's Lutheran Church, Aberdeen, S.D., LCMS South Dakota District
- Benjamin Bosch**, St. John's Lutheran Church, Grand Haven, Mich., LCMS Michigan District
- Mark Bray**, Our Savior Lutheran Church, McKinney, Texas, LCMS Texas District
- Erik Brinkert**, Redeemer Lutheran Church, Tillamook, Ore., LCMS Northwest District
- Brian Crocitto**, The Life Lutheran Church, Old Westbury, N.Y., LCMS Atlantic District
- John Durkin**, Prince of Peace Lutheran Church, Springfield, Va., LCMS Southeastern District
- Ryan Fields**, Living Faith Lutheran Church, Cumming, Ga., LCMS Florida-Georgia District
- Daniel Giardino**, The Life Lutheran Church, Old Westbury, N.Y., LCMS Atlantic District
- Adam Gray**, King of Glory Lutheran Church, Providence Forge, Va., LCMS Southeastern District
- George Holleway**, Emmaus Road Katy, Katy, Texas, LCMS Texas District
- Gary Johnson**, Mt. Calvary Lutheran Church, La Grange, Texas, LCMS Texas District
- David Keddington**, Anchorage Lutheran Church, Anchorage, Alaska, LCMS Northwest District
- Henry Pahlkotter**, Peace Lutheran Church, Saginaw, Mich., LCMS Michigan District
- Roger Penny**, Messiah Lutheran Church, Charlotte, N.C., LCMS Southeastern District
- William Roberts**, Faith Lutheran Church, Sebring, Fla., LCMS Florida-Georgia District
- Christopher A. Ryan**, St. Mark Lutheran Church, Chesterland, Ohio, LCMS Ohio District
- Christopher M. Ryan**, St. John's Lutheran Church, Buffalo, Minn., LCMS Minnesota South District
- David Schmitt**, Trinity Lutheran Church, Park Hills, Mo., LCMS Missouri District
- Jeffery Schoettlin**, Lincoln Lutheran Middle/High School, Lincoln, Neb., LCMS Nebraska District
- Carl Siem**, Lord of Glory Lutheran Church, Elk River, Minn., LCMS Minnesota North District
- Marvin St. Pierre**, St. John's Lutheran Church, Bakersfield, Calif., LCMS California-Nevada-Hawaii District
- Joseph Wallace**, St. John Lutheran Church, Newhall, Iowa, LCMS Iowa District East
- Rex Watt**, Redeemer Lutheran Church, Bellingham, Wash., LCMS Northwest District
- Jessy Wilson**, Bethlehem Lutheran Church, Delmar, N.Y., LCMS Atlantic District
- Steve Zandstra**, Grace Evangelical Lutheran Church, Cheyenne Wells, Colo., LCMS Rocky Mountain District

ETHNIC IMMIGRANT INSTITUTE OF THEOLOGY (EIIT)

Matthew Cephus, Royal Family Fellowship, New Hope, Minn., LCMS Minnesota South District

Moses Dangba, Living World Lutheran Church, Lansing, Mich., LCMS Michigan District

Guyo Galgalo, Oromo Evangelical Lutheran Church, Phoenix, Ariz., LCMS Pacific Southwest District

Lewi Jermiya, Christian Friends of New Americans, St. Louis, Mo., LCMS Missouri District

Isaac Lujang, Saint Paul Lutheran Church, Fort Worth, Texas, LCMS Texas District

John Vawar, Peace Lutheran Church, Hurst, Texas, LCMS Texas District

ETHNIC IMMIGRANT INSTITUTE OF THEOLOGY (EIIT) DEACONESS

Rebecca Jungklaus, Lutheran Deaf Outreach/St. John Lutheran Church, Austin/Cypress, Texas,

LCMS Texas District

CENTER FOR HISPANIC STUDIES (CHS)

Ruberto Ek Yah, Ascension Lutheran Church, Portland, Ore., LCMS Northwest District

Jorge Gómez, New Creation Lutheran Church, Prior Lake, Minn., LCMS Minnesota South District

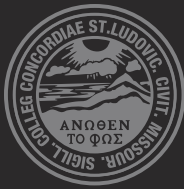
Jaime González, Our Savior Lutheran Church, Rockwall, Texas, LCMS Texas District

CENTER FOR HISPANIC STUDIES (CHS) DEACONESS

Fabiana Dos Santos, Our Savior Lutheran Church, Rockwall, Texas, LCMS Texas District

María Barrón Valadéz, Our Savior Lutheran Church, Rockwall, Texas, LCMS Texas District





Concordia
Seminary
ST. LOUIS

801 Seminary Place, St. Louis, MO 63105 | 314-505-7000 | csl.edu

